

CILTHK Kerry Logistics Scholarship 2018/19

Competition or Integration?

Development of Greater Bay Area in
Integrated Logistics Sectors

Understanding Pearl River Delta/ Greater Bay Area





The European Union



The Belt and Road Initiative



Positioning of Hong Kong





Primary Sector



Secondary Sector



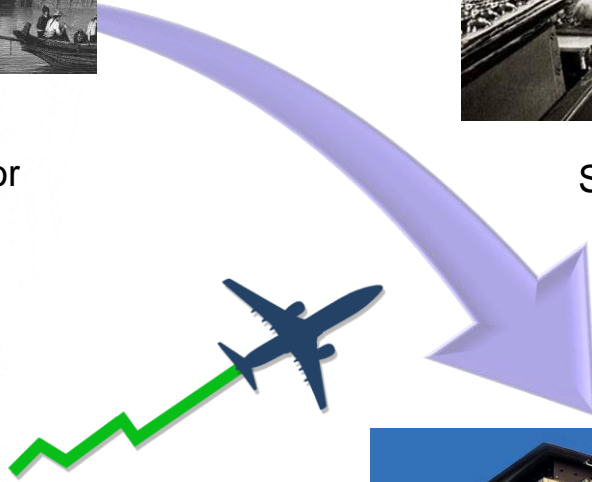
International
Financial Centre



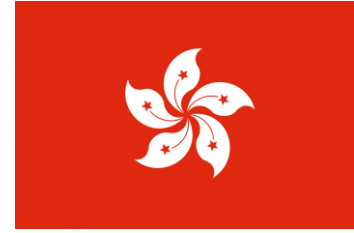
Innovation
Technology Hub



Tertiary Sector



One Country, Two Systems



Cabotage Relaxation



Busiest Air Cargo Hub
Hong Kong International Airport
(Source: Airport Council International, 2019)



Problem of Wages/ Rental Cost

Hinterlands



A map of Southern China, specifically the Guangdong province and surrounding areas. The map is divided into two main regions: 'Hinterlands' and 'Gateways'. The 'Hinterlands' region is the western and northern part of the map, containing numerous cities. The 'Gateways' region is the eastern part, centered around the Pearl River Delta. Blue arrows point from various cities in the hinterlands towards the gateway cities. The gateway cities are marked with blue location pins, except for Hong Kong which is marked with an orange pin. The map shows a network of roads and rivers, with the coast visible on the right side.

Gateways

Same services, lower wages in sea ports of GBA



Governance vs Management



Separation of Operation & Regulation

Central Government



Central Enterprises/
State-owned
Enterprises



中国南方航空
CHINA SOUTHERN



AIR CHINA
中国国际航空公司



中國東方航空
CHINA EASTERN

Subsidiaries



厦门航空 XIAMENAIR



重庆航空
CHONGQING AIRLINES

深圳航空
Shenzhen Airlines



上海航空公司
SHANGHAI AIRLINES



Factions Competition



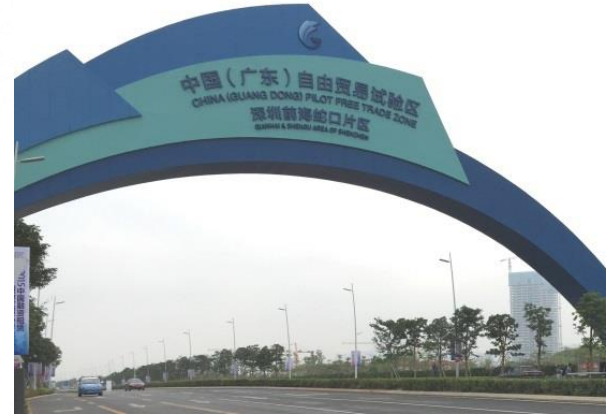
Cabotage Relaxation



Shanghai Free Trade Zone



Qingdao Free Trade Zone



Guangzhou Free Trade Zone

Shenzhen-
Zhongshan Bridge
will share the
traffic of HZM
Bridge in the
future



Task Specialisation by Regions



Beijing (North)


Shanghai (East)

Hong Kong/
Guangzhou/ Shenzhen
(South)

Features of Major Airports in GBA

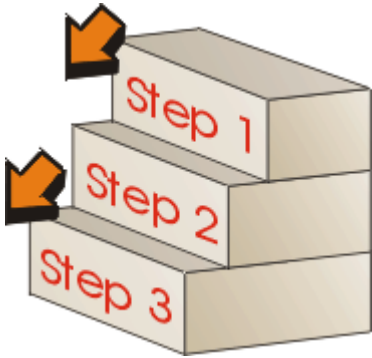


Hong Kong International Airport	Guangzhou Baiyun International Airport	Shenzhen International Airport	Macau International Airport	 Zhuhai Jinwan Airport
---------------------------------------	---	--------------------------------------	-----------------------------------	--



What makes Hong
Kong still good at
Integrated Logistics
Services ?

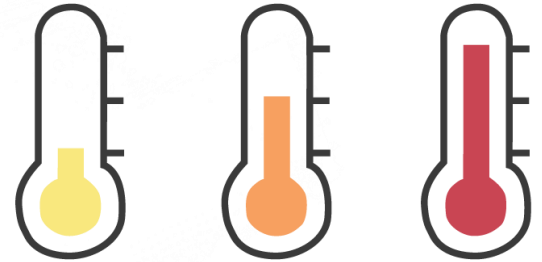
Consistency



Systematic Procedures

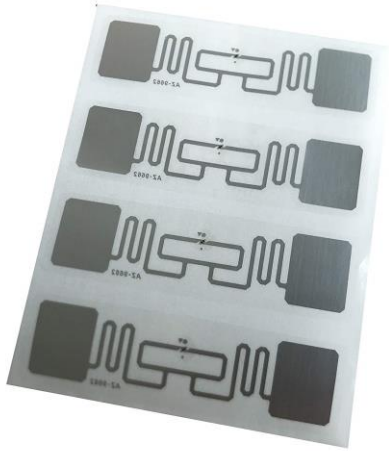


All-rounded support

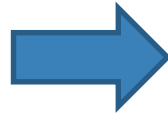


Temperature Control

Value Added Services



RFID Tag



Smart Tracking Sensor



Conclusion

- × The integration of GBA is still too idealistic
- × Make good use of the strengths
- × Merge with the other 9 cities in GBA



Thank you

References

Airport Council International. (2019, March 13). Preliminary world airport traffic rankings released. Retrieved May 23, 2019, from <https://aci.aero/news/2019/03/13/preliminary-world-airport-traffic-rankings-released/>

Brand Hong Kong. (2019). Greater Bay Area. Retrieved May 20, 2019, from <https://www.brandhk.gov.hk/html/en/StrategicFocus/GreaterBayArea.html>

Chen, C. (2016, November 24). China's easing of cabotage rules deals serious blow to Hong Kong ports industry, say experts. South China Morning Post. Retrieved May 23, 2019, from <https://www.scmp.com/business/global-economy/article/2049041/chinas-easing-cabotage-rules-deals-serious-blow-hong-kong>

Lau, H., Sun, M., & Li, J. (2018, January 24). China's Belt and Road Initiative: Project Pave the Way. Retrieved May 20, 2019, from <https://www.herbertsmithfreehills.com/latest-thinking/chinas-belt-and-road-initiative-projects-pave-the-way>

Onag, G. (2019, May 17). Kerry Logistics tracks high-valued goods with new smart sensors. ComputerworldHK. Retrieved May 22, 2019, from <https://www.cw.com.hk/cloud/kerry-logistics-tracks-high-valued-goods-new-smart-sensors>

References

Schengen Visa Info. (2018, November 23). The European Union and Countries in the EU. Retrieved May 20, 2019, from <https://www.schengenvisainfo.com/eu-countries/>

Su, X. (2019, February 10). Zhuhai's proposal for new bridge linking it with Shenzhen means Hong Kong should rethink its relationship with mainland neighbours, lawmaker says. South China Morning Post. Retrieved May 21, 2019, from <https://www.scmp.com/news/hong-kong/transport/article/2185581/zhuhais-proposal-new-bridge-linking-it-shenzhen-means-hong>